

## 2/2 WAY DIRECT ACTING SOLENOID VALVE, G 1/8" - G 1/4"

### COMMON FEATURES

Body material: brass (CW617N EN 12165)

Orifice material: stainless steel (1.4305 EN 10088/AISI 303)

Operator material: stainless steel

Protection class: IP 65 (with connector and gasket)

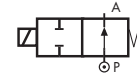
### OPTIONS

Available with body thread connection 1/8" (e.g. code RD262DVA), performance ratings remain the same as RD263DVA.

For steam version with filled PTFE seal (Sigodur) see valve model **RD236DL-** on TIS \*50 08\*

For high pressure version with Ruby seal see valve model **RD236DR-1** on TIS \*50 08\*

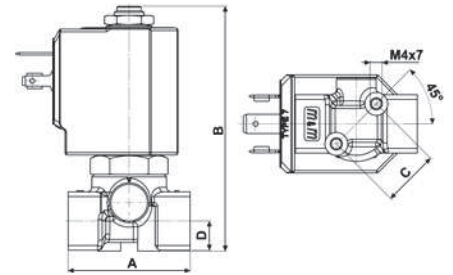
### TYPE: RD262/263



Normally Open



DIMENSIONS & WEIGHTS		RD262	RD263
<b>G connection</b>	[ISO 228]	1/8"	1/4"
<b>A</b>	[mm]	40	40
<b>B</b>	[mm]	77.7	77.7
<b>C</b>	[mm]	18.5	18.5
<b>D</b>	[mm]	9.5	9.5
<b>weight</b>	[kg]	0.26	0.26



Flow direction overseat 1 → 2

VALVE	nominal Ø	flow rate Kvs	OPD			COILS	
			min.	max. AC	max. DC	class 'H' only	
code	[mm]	[l/min]	[barg]	[barg]	[barg]	code	[Volts/Hz]
<b>RD263DVA</b>	1.0	0.5	0	30	30	7251	24v DC
<b>RD263DVC</b>	1.5	1.3	0	24	24	7201	24v 50/60Hz
<b>RD263DVG</b>	2.5	3.4	0	16	16	7401	110v 50Hz - 120v 60Hz
<b>RD263DVH</b>	3.0	4.5	0	10	10	7601	200v 50Hz - 220v 60Hz
						7701	230v 50Hz - 240v 60Hz

### RD262/263 - FKM seal, NO -

Media: water, oil, air

Media temperature: -10°C + +130°C

Ambient temperature: -10°C + +50°C

Seal material: foodgrade FKM

Coil power: AC 18v<sub>A</sub> (holding)

AC 36v<sub>A</sub> (inrush)

DC 14w

### OPTIONS

**EPDM** seal, temperature max. 120°C (e.g. code RD262DEH)

