

**JULY-AUGUST 2024**

**FEATURED  
SUPPLIERS**



**Paint Markers**  
70818, White  
70820, Red  
70822, Yellow  
70819, Black

**4.41**



**Solder, Electrical Repair,  
Rosin Core**  
38073  
1/16 In, 4 Ounce

**14.47**



**Tip Cleaner Kit**  
Sizes 6 through 26  
86120

**8.16**



**Cut-Off Wheels**

PART#	SPECS	
71842	METAL, TYPE 1, 3 in x 1/8 in x 1/4 in	<b>2.50</b>
71843	METAL, TYPE 1, 3 in x 1/8 in x 3/8 in	<b>2.50</b>
71855	METAL, TYPE 1, 3 in x 1/32 in x 3/8 in	<b>2.32</b>
71844	METAL, TYPE 1, 4 in x 1/16 in x 3/8 in	<b>2.25</b>
71847	METAL, TYPE 1, 4-1/2 in x 1/16 in x 7/8 in	<b>2.98</b>



**Kool-Air One  
Sealant (Metal)**  
AR4237HP

- 1oz of metal sealant
- 2oz of premium Repla 134

**15.00**



**Kool-Air Two  
Sealant (O-Ring)**  
AR4238HP

- 1oz of rubber sealant
- 2oz of premium Repla 134

**7.88**



**Prestone® MAX 15+ Year All  
Vehicles Antifreeze + Coolant**  
78237  
3.78L

**18.96**

**Prestone®**



**Permatex® Steel Weld® Epoxy**  
84119  
25ml carded syringe  
**6.53**



**Plastic Welder**  
84126  
25ml carded syringe, black  
**6.97**



**Ultra Bond**  
49512 - 28g Carded Bottle  
**16.44**



**Heavy Duty Spray Adhesive**  
27829  
**13.91**



**Fast Orange® Hand Cleaner Wipes**  
25051 - 72CT Bucket  
*Removes the toughest grease, tar, grime, ink, paints, sealants and adhesives. Pre-moistened, dual textured wipes.*  
**17.06**



**Heavy-Duty Cleaner/Disinfectant**  
C26804 - 4L Jug  
**23.38**  
**Spray Nine**



**Glass Cleaner**  
27416 - 990ml  
**2.84**



**Original Protectant**  
78021 - 473ml  
**10.25**



**Multi Purpose Cleaner**  
11068  
473ml  
**4.03**



**Original Protectant Wipes**  
10859, 25 wipes  
**Cleaning Wipes**  
10869, 25 wipes  
**Glass Wipes**  
10850, 20 wipes  
**Leather Wipes** **8.92**  
10856, 20 wipes  
**Cleaning Wipes, Orange**  
10925, 25 wipes



**Car Carpet, Salt Stain & Upholstery Cleaner Spray**  
17261D  
510ml  
**8.71**



**Complete Car Care 5pc Kit**  
18378  
Tire Foam Protectant  
Ultra Shine Wash and Wax  
Original Protectant  
Cleaning Wipes  
Auto Glass Cleaner  
**28.85**



**Microfibre Cleaning Towels**  
18827  
**16.99**





### QAP Synthetic 0W-16

FX0004806, 946ml  
Sold by case of 6

**6.98** /EA

FX0004830, 5L  
Sold by case of 4

**33.73** /EA



### QAP Premium Motor Oil 10W30

FX0004315, 946ml  
Sold by case of 6

**5.43** /EA

FX0004330, 5L  
Sold by case of 4

**27.92** /EA

**Quality**  
**AUTOMOTIVE**  
**Products™**



### Water Resistant Silicone Lubricant w/Smart Straw

02279

**10.42**



### High Performance White Lithium Grease

01180

**9.10**



### Rust Release Penetrant Spray w/Smart Straw

02278

**10.42**



### Dirt & Dust Resistant Dry Lube PTFE Spray

01209

**9.48**



### Spray & Stay Gel Lubricant

02221

**12.52**



### Industrial Strength Degreaser 425G

02220

**8.89**



## LOCTITE®

### LOCTITE 4070 Structural Instant Adhesive Hybrid

2264448 - 10 ml Boxed kit with 4 Nozzles

Typical Applications: Interior trim pieces,  
consoles, dash components, molded  
bumpers, trim repair, custom fabrication.

**24.32**



### Coat & Protect

CP6010 - 830 ml (Amber)

**17.33**



**1 EXPERT**  
**RUST CONTROL**



### LOCTITE SI 596 Red High Temp RTV

38629 - 300ml Cartridge

**12.38**



### LOCTITE 277 Threadlocker

Heavy Duty/Large Bolts

38627 - 36ml Carded Bottle

**31.96**



### LOCTITE 242 Threadlocker

Medium Strength

38622 - 36ml Carded Bottle

**33.34**



**Can OBDII Diagnostic Scan Tool**  
W2977

**44.<sup>95</sup>**



**600 Peak Amp Power Bank and Jump Starter**  
W16751

**95.<sup>89</sup>**

*WHILE SUPPLIES LAST*



**NEW**

**2-in-1 40" Z-Frame Folding Creeper**

W85018

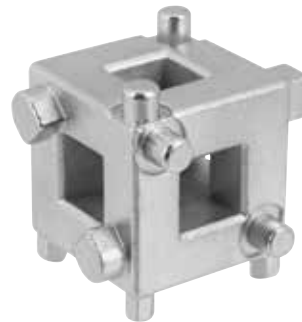
This Z-frame creeper serves two shop necessities: it lies flat for easy access under low-clearance vehicles, and it folds into a seat for working on vehicle level in comfort.

**60.<sup>43</sup>**



**Black Electrical Tape**  
3/4" x 60'  
W502

**1.<sup>16</sup>**



**3/8" Dr. Disc Brake Caliper Piston Tool**  
W80621

**7.<sup>08</sup>**



**4-1/2 Gallon Oil Drain Pan**  
W4071

**19.<sup>07</sup>**



**20" SAE/Metric 4-Way Lug Wrench**  
W1

**20.<sup>23</sup>**



**PROFESSIONAL HAND TOOLS**



**LUBRICATION**



**SPECIALTY TOOLS**



**BATTERY SERVICE**



**LIGHTING SOLUTIONS**



**CARGO CONTROL**

**An extensive variety of tools and accessories across over 4500 sku's**

**New 240,000 sq. foot distribution facility in Kent, WA**

**Third party testing to ensure quality products**

**Lifetime warranty attributes offered on many of our tools across the line**



**Head Gasket Fix**  
31111 - 680g

**35.<sup>35</sup>**



**Fuel, Exhaust & Emissions System Cleaner**  
34720 - 500ml

**28.<sup>59</sup>**



**Radiator Stop Leak**  
31197 - 325ml

**5.<sup>29</sup>**



**Rear Main Seal Repair**  
34240 - 500ml

**10.<sup>23</sup>**



**Liquid Aluminum Cooling System Stop Leak**  
31186 - 500ml

**9.<sup>59</sup>**



**Rislone Engine Treatment**  
34102 - 500ml

**7.<sup>73</sup>**



**Brakleen® Original**  
75089 539 g aerosol

**6.<sup>38</sup>**



**Dry Graphite Lubricant**  
75101 320 g aerosol

**13.<sup>11</sup>**



**Heavy Duty Silicone Lubricant**  
75074 213 g aerosol

**8.<sup>03</sup>**



**Posi-Trac™ Limited Slip Gear Oil Additive**  
742508 207 mL tube

**17.<sup>04</sup>**



**Brakleen BPC Non-Chlor Low-VOC**  
1754922 396 g aerosol

**5.<sup>12</sup>**



**Engine Degreaser**  
75025 425 g aerosol

**8.<sup>28</sup>**



**Gravel Guard**  
SVG1 405g

**11.<sup>30</sup>**



**EZ Liner Aerosol**  
SEZL 467g

**14.<sup>71</sup>**



**Fast Cure Urethane Auto Glass Adhesive/Sealant**  
CUSF 310ml

**14.<sup>09</sup>**



**Sure Seal Seam & Joint Sealer** 300ml

CSB Black  
CSW White

**9.<sup>22</sup>**





WHILE SUPPLIES LAST

**The BIG RED Pail**  
5-gallon Food Grade plastic  
Pail with metal handle

RED PAIL **5.21**

PAIL LID **2.03**



air fresheners

**0.95** /EA  
Sold in packs of 24



- U1P-10189 NEW CAR SCENT
- U1P-10155 BLACK ICE
- U1P-10105 VANILLAROMA
- U1P-10290 LEATHER
- U1P-10101 ROYAL PINE
- U1P-17146 TRUE NORTH
- U1P-10317 COCONUT
- U1P-10312 STRAWBERRY
- U1P-17068 FRESH SHAVE
- U1P-17308 ROSE THORN



**4800 Raw Lumens,  
Small Cube**  
BZ221-5

**46.98**



**600 Raw Lumens,  
Pocket Folding**  
BZ431-5

**36.03**



**LED Beacon  
Permanent Mount,  
Class II, Amber**  
78853

**99.08**



**Brite Zone™ Round  
LED Work Lamp**  
BZ101-5

1600 Effective Lumens

**37.59**



**700 Raw Lumens,  
Pocket Twinbeam**  
BZ531-5

**39.16**



**Metal Cutting  
Reciprocating Bi-Metal  
Blade**

372618BB  
18 TPI / 8" / 203mm

**1.89**



**Curved Jaw Locking  
Pliers**

502L3  
10"

**19.41**



**Double Ended Body  
Drill Bit**

60608  
1/8"

**1.68**



**PAO 68 Oil & PAO 68 Oil + Dye**

51110/51111

- Universal, high-quality, multi-grade synthetic oil
- Improves efficiency with quicker pull down times & lower vent temperatures
- Eliminates carrying different grades or viscosities of A/C lubricants
- Fill-up or top-up

51110 – 34 oz | 1 L

51111 – 34 oz | 1 L + UV Dye



**46.33** /EA



**Sea Foam Fuel & Oil  
Additive Marine Engines**

MP16CA  
473ml

**10.07**



**Gas Cans**

Equipped with an easy-to-pour flexible spout  
which stores inside the can when not in use.

**20L/5.3 Gal**  
07622

**10L/2.5 Gal**  
07079

**17.87**

**11.31**



**SCEPTER™**

## WD-40® MULTI-USE PRODUCT

WD-40® Multi -Use Product protects metal from rust and corrosion, penetrates stuck parts, displaces moisture, dissolves adhesives and lubricates just about anything.

WD-40® Multi -Use Product - Problem Solved. Job Done Right™



01218 155g

**5.<sup>59</sup>**

01103 411g

**10.<sup>74</sup>**

01110 3.785L

**42.<sup>48</sup>**

01204 18.9 Litre Pail

**191.<sup>20</sup>**



### WD-40® 325G Multi-Use Product Lubricant w/Smart Straw

02272

- Never lose the straw again
- Flip straw up for stream and down to spray
- Toolkit friendly
- Safety lock prevents accidental discharge

**9.<sup>08</sup>**



### WD-40® 408G Multi-Use Product EZ-Reach w/Smart Straw

02077

- Innovative 20 cm (8") Flexible Straw keeps its shape
- Gets into hard-to-reach places with a precise spray
- Flip straw up for stream and down to spray
- Safety lock prevents accidental discharge

**15.<sup>83</sup>**

**NEVER LOSE THE STRAW AGAIN®**



**LEARN HOW**



**26 Old Placentia Rd  
Mount Pearl, NL · A1N 4P5**

**709-747-1331**